

# SUNWORKER CRISTAL

The ultimate waterproof awning



**DICKSON**<sup>®</sup>  
solar protection

# SUNWORKER CRISTAL

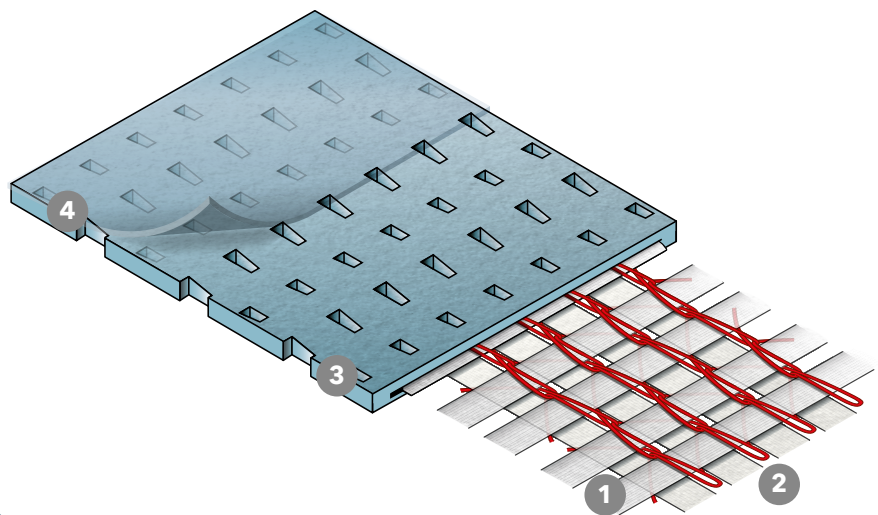
## WATERPROOF AND TRANSLUCENT SOLAR-PROTECTIVE FABRIC

Composed of SUNWORKER fabric and a thin translucent membrane, SUNWORKER CRISTAL solar-protective fabric offers the benefits of both an open-weave fabric (brightness) and a composite material (impermeability, tear-resistance, ease of maintenance).

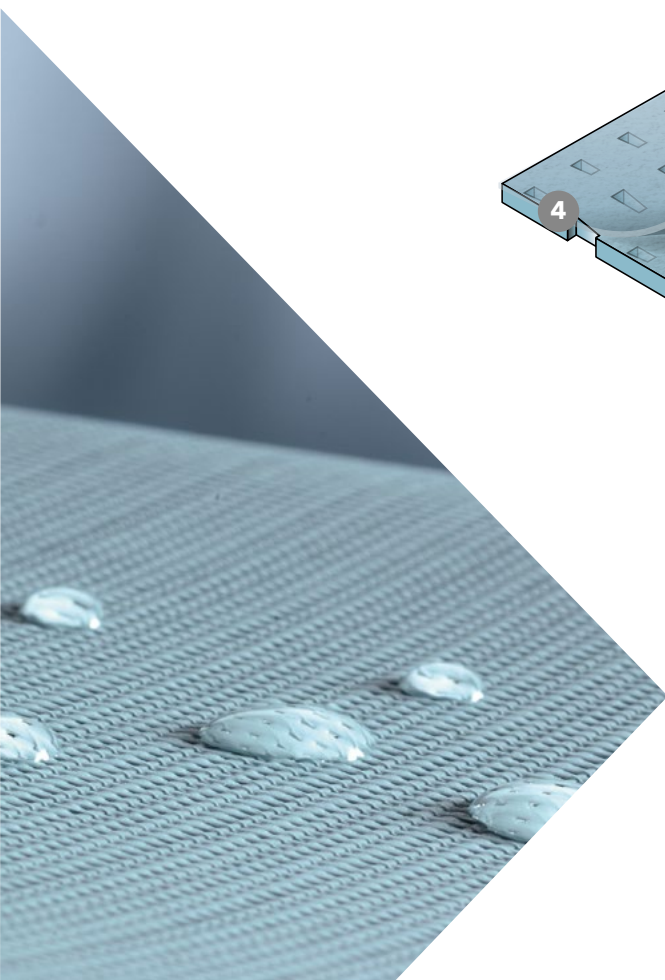
Designed to provide solar protection to individuals and professionals alike (cafés, hotels, restaurants and public buildings), it offers an effective way of meeting the objectives laid down in the EU Directive on the Energy Performance of Buildings and is perfectly suited to outdoor use and tensile structures (pergolas, shade sails and velums).



## AN INNOVATIVE WEAVING TECHNIQUE FOR UNPARALLELED STRENGTH AND TOTAL WATERPROOFNESS



- 1 Textile ply formed by weaving high-strength polyester yarn.
- 2 Binder yarn secures the textile ply but allows the threads to move independently of each other, thereby distributing and absorbing the mechanical energy in the event of tearing.
- 3 A special coating that protects colours from UV rays and inclement weather.
- 4 Waterproof translucent membrane.





# SUNWORKER CRISTAL

## 5 GOOD REASONS TO CHOOSE A SUNWORKER CRISTAL FABRIC

### 1 VISUAL COMFORT AND PRIVACY

enhances user well-being

#### Soft, uniform light

With a 4% open weave, SUNWORKER CRISTAL allows natural light to filter into your living space.

- Optimal glare control
- Provides soft filtered light that changes depending on the colour chosen
- Exceptional translucency

#### Total privacy both day and night

Used as a vertical roll-down awning, SUNWORKER CRISTAL fabric blocks the view from the outside in, even when the lights are switched on in the room.

### 2 AESTHETICS

preserves the building's aesthetics

- This composite fabric, whose textile-like appearance is unique on the market, **offers complete protection from inclement weather**
- **Available in extra-wide sizes** to offer unlimited design options and give your projects a sense of architectural unity
- **Positioned horizontally or vertically**, SUNWORKER CRISTAL preserves the building's aesthetic appeal
- Comes in a **range of coordinating colours that complement the other fabrics** in the SUNWORKER range, guaranteeing a perfectly harmonious result, regardless of the fabric chosen (Sunworker, Opaque, Metal, Open)
- **Can be printed** with a design in order to customize your project

### 3 THERMAL COMFORT

excellent thermal performance

SUNWORKER CRISTAL acts as a thermal filter:

- Repels up to 95% of the heat from the sun's rays
- Improves the window's insulation
- Acts as a barrier to radiation from the window (minimizing cold gain in the winter and excessive heat gain in the summer)

### 4 MAXIMUM RESISTANCE AND SAFETY

a fabric that stands the test of time

#### The highest mechanical resistance on the market

- SUNWORKER CRISTAL fabric offers unparalleled strength thanks to the Rachel Trameur-type weave



- A special coating that protects colours from UV rays and inclement weather

#### A fabric that can stand up to anything

- Naturally resists micro-organisms and mould
- A fully waterproof membrane, offering maximum protection against inclement weather

#### Maximum safety

- Guaranteed fire-retardant
- Certified by official accredited bodies

### 5 COST-EFFECTIVE

a thin and discreet fabric

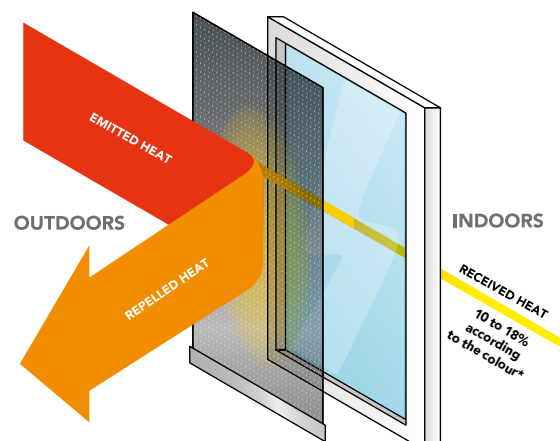
A thin, lightweight fabric that:

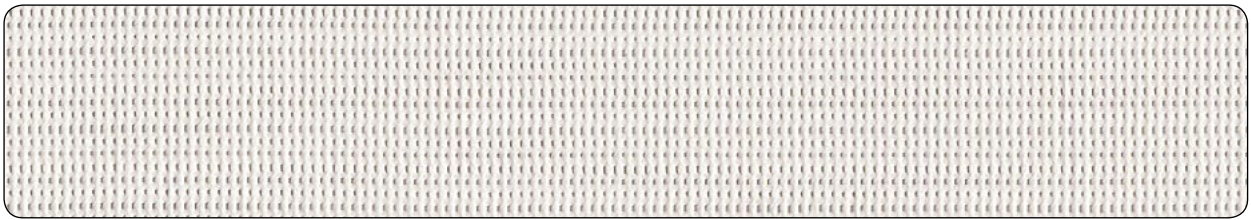
- **Fosters ease-of-use**
- Reduces investment costs by requiring a **less bulky supporting framework**

An **extra-wide size** resulting in reduced manufacturing costs

**Energy savings** thanks to enhanced insulation

**A significant improvement in the building's carbon footprint** throughout its lifetime



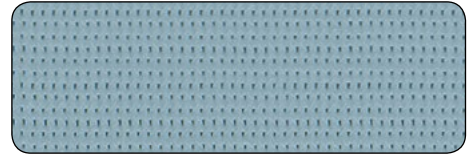


THE TRANSLUCENT MEMBRANE SIDE ALWAYS FACES OUTWARDS

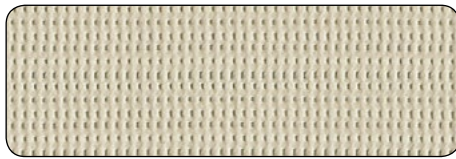
SWC M006  
PEARL



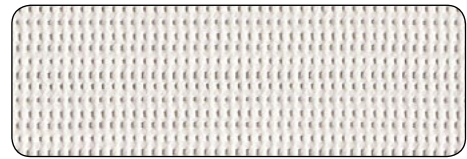
SWC M721  
FROST



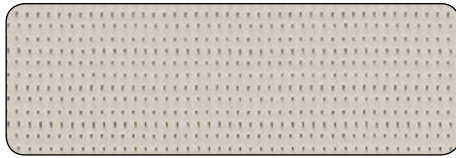
SWC M712  
BEIGE



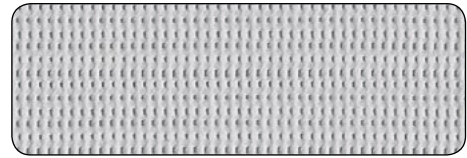
SWC M005  
WHITE



SWC M939  
ELEPHANT



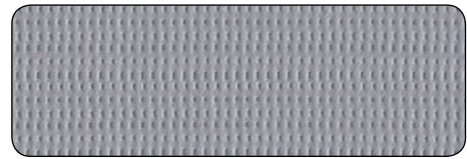
SWC M654  
GREY



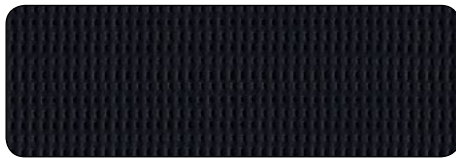
SWC M715  
BISON



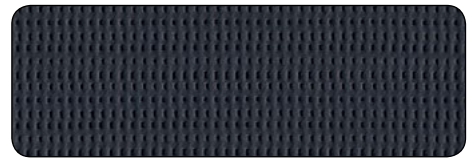
SWC M652  
SILVER



SWC M391  
BLACK



SWC M392  
CHARCOAL



## THERMAL AND VISUAL PERFORMANCE

according to standards EN 410, EN 14500, EN 14501 and EN 13363-1

Colour no.	Solar factors		Energy efficiency			Visual performance			UV-blocking performance	Colour equivalents	
	gtot* ext.	gtot* int.	τe	ρe	αe	τV	ρV	αV	τUV	NCS	RAL
SWC M005	0,17	0,37	0,24	0,62	0,14	0,21	0,71	0,08	0,02	S 0500-N	9016
SWC M006	0,18	0,39	0,25	0,57	0,18	0,21	0,58	0,21	0,01	S 1005-Y10R	9002
SWC M391	0,11	0,55	0,05	0,07	0,88	0,05	0,07	0,88	0,02	S 8500-N	9011
SWC M392	0,11	0,55	0,05	0,07	0,88	0,05	0,07	0,88	0,02	S 7500-N	7016
SWC M652	0,10	0,49	0,07	0,25	0,68	0,06	0,28	0,66	0,02	S 4500-N	7045
SWC M654	0,13	0,42	0,15	0,44	0,41	0,12	0,48	0,40	0,02	S 1500-N	7047
SWC M712	0,13	0,46	0,14	0,47	0,39	0,11	0,52	0,37	0,02	S 2010-Y10R	+/- 7032
SWC M715	0,11	0,53	0,06	0,13	0,81	0,06	0,14	0,80	0,02	S 7005-Y80R	+/- 8019
SWC M721	0,16	0,42	0,20	0,46	0,34	0,10	0,36	0,54	0,02	S 2020-B10G	+/- 5024
SWC M939	0,13	0,46	0,12	0,35	0,53	0,10	0,38	0,52	0,01	S 3005-Y20R	7030

τe : solar transmission - ρe : solar reflection - αe : solar absorption - τV : visual transmission - ρV : visual reflection - αV : visual absorption - τUV : UV transmission - \*gtot : solar factor for the combination of fabric + reference glazing C (double glazing 4+16+4 with low-emission layer on side 3, Argon filling; U=1.2 W/m2K; g=0.59).

The thermal and visual characteristics of our products are measured using standards EN 410, EN 14500, EN 14501 and EN 13363-1. As the quality of these measurements is critical to a project's success, measurements taken internally cannot be relied upon alone. Dickson therefore entrusts these measurements to an official accredited laboratory, CSTC/WTCB (Centre Scientifique et Technique de la Construction), which produces an independent report officially establishing the product's characteristics.

# SUNWORKER RANGE

## TOTAL FLEXIBILITY

Give your project a sense of consistency and harmony by mixing and matching the various finishes and coordinating colours.



## SUNWORKER

Optimal visual and thermal comfort

## SUNWORKER METAL

Enhanced thermal performance



## SUNWORKER OPAQUE

Blackout awning, the cost-effective alternative to rolling shutters



## SUNWORKER CRISTAL

The ultimate waterproof awning



## SUNWORKER OPEN

Enhanced visual comfort allowing natural light to filter through

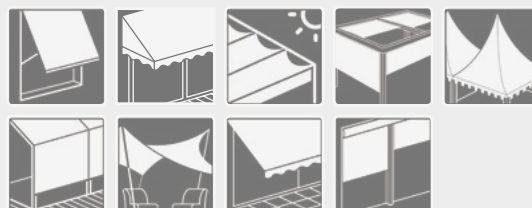


For the general terms of warranty, please see [www.dickson-constant.com](http://www.dickson-constant.com)

Sunworker fabrics have a small carbon footprint and are Greenguard-certified, helping create a healthier and less polluting indoor environment. Installing a Sunworker fabric can consequently earn points towards green building certification.

## SUNWORKER CRISTAL FABRIC IS IDEAL FOR OUTDOOR USE

Can be used both indoors and outdoors, at temperatures ranging from -30°C to 70°C.



## TECHNICAL SPECIFICATIONS

	Weight NF EN ISO 2286-1	Flame retardancy M2 (NF 92503) B1 (DIN 4102) C1 (UNI 9176)	Schmerber ISO 811	Oppenness factor	Thickness NF EN ISO 2286-3	Tearing strength in daN/5cm DIN 53363	Tensile strength in daN/5cm NF EN ISO 13934-1	Width/roll length
<b>SUNWORKER CRISTAL</b>	440g/m <sup>2</sup>	M2 - B1 - C1	>10 000 mm	4%	0,48mm	Warp 69 Weft 30	Warp 235 Weft 155	296 cm /25 m

These technical specifications are average values with a tolerance of +/- 5%. All the specifications featured in this brochure are for information only and do not constitute a guarantee. Their sole purpose is to provide a general description of the products. They may not be construed as a contractual commitment on our part. It is the customer's responsibility to check the validity of this information and the compliance of the merchandise received prior to installation, carrying out preliminary tests if necessary. It is also his/her responsibility to ensure that the selected product is suitable for its intended use. The customer is responsible for using the product under normal foreseeable conditions and in accordance with all safety and environmental regulations currently in force in the place of use as well as the professional standards of his/her sector. Dickson Constant reserves the right to withdraw from the market any of the products that feature in this brochure and/or to amend the related specifications.

## SERVICES

- Personalized simulation of the thermal performances of your projects : [prescription@dickson-constant.com](mailto:prescription@dickson-constant.com)
- Advisory service available to offer guidance and suggest the most appropriate solutions for your project, in line with your specifications : [prescription@dickson-constant.com](mailto:prescription@dickson-constant.com)

10 rue des Châteaux  
BP 109 - Z.I. La Pilaterie  
59443 Wasquehal Cedex - France  
[www.dickson-constant.com](http://www.dickson-constant.com)  
Tél. +33 (0)3 20 45 59 59  
Fax +33 (0)3 20 45 59 00

**Performance fabrics for**  
Solar protection  
Outdoor furniture  
Indoor furniture  
Marine furnishing  
Flooring

